

2023/24

Maths Hubs Professional and School Development Opportunities

Discover fully funded subject-specific opportunities to support professional learning for teachers and development for departments and schools.



What opportunities does the Maths Hubs Network offer?



Again this academic year, the 40 Maths Hubs across England are offering a wide variety of professional development opportunities to individuals, departments and schools.

All of the projects involve teachers developing their knowledge and pedagogy for maths teaching, whilst collaborating with their peers and putting their new knowledge to work in their classrooms. Most also aim to influence classroom and collaborative practice that benefits maths teaching and learning across a department or school.

These professional development opportunities are coordinated by the NCETM (National Centre for Excellence in the Teaching of Mathematics) and the Maths Hubs Network, which consists of 40 hubs that cover the whole of England and serve all state-funded schools and colleges.

For 2023/24, there are over 30 different projects available. Generally, teachers will work alongside colleagues from other schools, in a small group led by a local experienced teacher with expertise in professional development and the school phase in question. A small number of projects involve larger groups, coordinated and led regionally or nationally. Meetings are a mix of online and face-to-face. The work takes place over an extended period, across two or three school terms, which allows for experimentation and experience-sharing within the group. Many projects include a parallel objective of embedding improved practice, leading to more secure learning across a department or school.

Participants will be involved in either **Work Groups, programmes or communities**, according to the experience offered to participant teachers (see page 3). However, all offer fully-funded, high-quality professional development, and the chance for participants to become more effective teachers of maths.



Types of activity

<h2>Work Group</h2>	<p>Work Groups support schools to bring about school- or departmental-wide development in maths. Lead participant teachers from the schools collaborate locally with their peers to focus on this school-wide change, along with the associated practice development and professional learning. Work Groups are led by a teacher (or former teacher) expert, who is experienced in both maths education and in leading teacher professional development.</p>
<h2>Programme</h2>	<p>Programmes support individual teachers or leaders of maths in their professional development. There are two types: Specialist Knowledge for Teaching Mathematics (SKTM) programmes, where individuals develop specialist knowledge to improve their practice; and Local Leaders of Mathematics Education (LLME) development programmes, to equip practitioners to lead work with teachers and schools. Both involve participants joining a cohort of colleagues from other schools or colleges, and exploring centrally produced NCETM materials.</p>
<h2>Community</h2>	<p>Professional learning communities also emphasise supporting individual teachers or leaders of maths in their professional development. Participants collaborate formally and informally, over a sustained period of more than a year, to deepen their understanding of maths culture, curriculum, pedagogy, and professional development. Community Leads establish a professional learning culture that supports professional dialogue and mutual support, offering their own expert input where appropriate.</p>



How can you get involved?

Discover the projects your local Maths Hub is offering – details of all the projects are in this catalogue. Then get in touch with your hub to book your place. Contact details for your hub are on the next page.

The Maths Hubs projects provide something for everyone and every school. Don't miss out!

Welcome

Your local Maths Hub is:

SUSSEX MATHS HUB

The professional development we provide is fully funded, meaning it is **free** for the participant or the participant's school/college.

The Lead School for the hub is:

St Paul's Catholic College

Some of the professional and school development activities in this catalogue take place in face-to-face meetings. Others happen online. In most cases you will be working together with colleagues from schools in your area.

To find out more about the Work Groups, programmes and communities on offer with your hub, check the details in the box on the bottom left corner of each page.

You can also contact us directly at the Maths Hub, or visit our website.

We look forward to hearing from you.

Contact

St Paul's Catholic College
Jane Murray Way
Burgess Hill
West Sussex
RH15 8GA

www.sussexmathshub.co.uk

01444 873 905

hello@sussexmathshub.co.uk



NCETM
NATIONAL CENTRE FOR EXCELLENCE
IN THE TEACHING OF MATHEMATICS

Contents

Discover details of all these professional development opportunities in this catalogue

Professional Development for Primary Schools and Teachers

- Mastering Number at Reception and KS1 Work Groups
 - Mastering Number at KS2 Work Groups
 - Mastery Readiness Work Groups
 - Primary Teaching for Mastery Development Work Groups
 - Years 5-8 Continuity Work Groups
-

Specialist Knowledge for Teaching Mathematics Programmes

- Early Years Teachers Programmes
 - Primary Teachers Programmes
 - Primary Teaching Assistants Programmes
 - Primary Early Career Teachers Programmes
 - Secondary Early Career Teachers Programmes
 - Secondary Non-specialist Teachers Programmes
 - Secondary Teaching Assistants Programmes
 - Core Maths Teachers Programmes
-

Professional Development for Secondary Schools and Teachers

- Secondary Teaching for Mastery Development Work Groups
 - Secondary Maths Subject Leaders Community
 - Secondary Maths MAT Leaders Community
 - Years 5-8 Continuity Work Groups
-

Professional Development for Post-16 and Teachers

- Developing Core Maths Pedagogy Work Groups
 - Developing A Level Pedagogy Work Groups
 - Cross Phase – Supporting Low Attainers to Achieve a L2 Qualification in Mathematics Work Group
-

Leadership Development Opportunities

- Secondary Maths Subject Leaders Community
- Secondary Maths MAT Leads Programme



Fully funded

Mastering Number at Reception and KS1

Supporting pupils to develop good number sense

A national programme now in its third year

What is involved?

This programme focuses on the key knowledge and understanding needed in Reception classes, and progression through KS1. Participating schools will receive central training (online and face-to-face) and a wealth of pupil-facing resources.

These resources will provide teaching materials for four short sessions each week, aimed at developing children's fluency and flexibility with number. Lead Teachers in schools will also contribute to an online community to share practice and engage in critical reflection.

Who can take part?

Lead participants from Work Group schools will be three teachers – one each from Reception, Year 1 and Year 2 – known as Lead Teachers. Some support will also be given to subject leaders and headteachers. Where appropriate, Lead Teachers are expected to support the other teachers in their year group.

This programme and its Work Groups are open to all schools that have not yet engaged with the Mastering Number Programme.



Find out more

Search **mastering number at reception and KS1** online or contact your local Maths Hub:

<https://www.sussexmathshub.co.uk/mastering-number-ks1>

Benefits

- Your pupils will develop and demonstrate good number sense
- You will develop a secure understanding of how to build firm mathematical foundations
- You will work to develop teaching strategies focused on developing fluency in calculation and number sense for **all** children
- You will develop understanding and use of appropriate manipulatives to support your teaching of mathematical structures

The **Work Groups** are fully funded by the Maths Hubs Programme, so are **free** to participating schools.



Fully funded

Mastering Number at KS2

Work Groups

Secure firm foundations in multiplicative relationships

What is involved?

Knowledge of multiplication and division and its applications forms the single most important aspect of the KS2 curriculum, and is the gateway to success at secondary school. This project enables pupils in Years 4 and 5 to develop fluency in multiplication and division facts, and a confidence and flexibility with number that exemplifies good number sense.

Teaching materials will be provided to cover five short sessions a week, with participants expected to support colleagues in their year groups to use the resources with all Year 4 and 5 classes.

Who can take part?

This project is for schools that are involved in Mastering Number at Reception and KS1, and are also in a Sustaining Work Group. Lead participants from Work Group schools will be two teachers – one from each of Year 4 and Year 5. Support will also be given to maths leads and headteachers.



Find out more

Search **mastering number at KS2** online or contact your local Maths Hub:

<https://www.sussexmathshub.co.uk/mastering-number-ks2>

Benefits

- Your pupils in KS2 will develop automaticity in multiplication and division facts through regular practice
- You will develop an understanding of how pupils progress in their knowledge and understanding of multiplicative concepts
- You will work as part of a professional learning community to refine your practice
- You and your school leaders will develop Mastering Number at KS2 as part of the curriculum in Years 4 and 5

The **Work Groups** are fully funded by the Maths Hubs Programme, so are **free** to participating schools.



Fully funded

Mastery Readiness

Support for primary schools that want to adopt teaching for mastery in maths, but would benefit from a staged approach

What is involved?

Schools with additional challenges need bespoke support to ensure their systems and cultures are conducive to a teaching for mastery approach. Those who are not yet ready to join a Teaching for Mastery Development Work Group will prepare for implementing a teaching for mastery approach which is embedded and sustained across the whole school. This will involve receiving support from Mastery Readiness Leads, and developing classroom culture and attitudes to maths that will support a teaching for mastery approach, both on the part of teachers and their pupils.

After the year-long programme, Mastery Readiness schools will be ready to progress into Development Work Groups and beyond.

Who can take part?

Schools will have an identifiable barrier to being able to successfully implement teaching for mastery at present. Barriers may include an Ofsted grading of RI or Inadequate, poor pupil progress in maths, serving an area of low social mobility, or issues in the school that have meant the implementation of sustained change has been difficult.



Find out more

Search **mastery readiness** online or contact your local Maths Hub:

<https://www.sussexmathshub.co.uk/primary-mastery-readiness/>

Benefits

- Your pupils will demonstrate an improved mathematical mindset and potential to progress in the subject
- Your school leaders will promote a collaborative learning culture amongst staff in order to make improvements to the teaching and learning of maths
- You will put into practice the school's shared vision for what maths will look like in your school
- You will try new approaches to teaching maths and reflect on the impact of your changes regularly, so that you can share good practice beyond your own classroom

The **Work Groups** are fully funded by the Maths Hubs Programme, so are **free** to participating schools.



Fully funded

Primary Teaching for Mastery

Development Work Groups

Be part of the continuing programme to develop teaching for mastery in maths in primary schools

What is involved?

Two teachers from each participating school join a Work Group, consisting of around six local primary schools. Each Work Group is led by a trained Primary Mastery Specialist. Work Groups meet regularly to plan, observe and discuss teaching for mastery. In between meetings, teachers explore mastery approaches in their own classrooms and across their school.

Support is provided from a local classroom-based Mastery Specialist who leads the group. This model of professional development involves hands-on learning and peer-to-peer support. It is evidence-based and designed to support substantial long-term change.

Who can take part?

This is for state-funded primary schools in England. Each school must send two teachers to half-termly school-based teacher research groups. Each term, the Mastery Specialist will visit each of the schools.

In 2023/24, those teaching in special schools will have an enhanced offer that will enable them to network with other schools in a similar context.



Find out more

Search **developing mastery work groups** online or contact your local Maths Hub:

<https://www.sussexmathshub.co.uk/primary-tfm-development/>



Benefits

- Pupils will show a positive attitude towards maths and enjoy learning the subject
- Leaders will develop a common vision, culture and set of principles which support teaching for mastery
- Teachers will enhance their maths subject knowledge with an emphasis on progression within key areas of maths
- Teachers will cultivate a deep understanding of the principles and pedagogies related to teaching for mastery

The **Work Groups** are fully funded by the Maths Hubs Programme, so are **free** to participating schools.



Fully funded

Years 5-8 Continuity

Work Groups

Strengthen the transition from primary to secondary school

What is involved?

Work Groups in this project focus on curriculum and pedagogical continuity over Years 5 to 8. Participants will collaborate with colleagues from across KS2 and KS3, working on mathematical tasks together and reflecting on the resulting activity and learning.

Sessions will take place in KS2 and KS3 settings, offering the chance to see tasks in the context of a classroom. School-based activities between meetings encourage participants to make use of the resources with their own pupils.

Who can take part?

The project is for those who teach and/or have responsibility for the curriculum in Years 5-8. Participants may be subject leaders or teachers with responsibility for transition in a school. They need to be supported to try out different tasks with their students and be released to attend three full-day workshops.



Find out more

Search **years 5-8 continuity** online or contact your local Maths Hub:

<https://www.sussexmathshub.co.uk/years-5-8-continuity/>

Benefits

- Your pupils in KS2 and KS3 will demonstrate a positive attitude to maths
- You will make common use of approaches, representations and language across phases
- You will deepen your knowledge and understanding of the curriculum across KS2 and KS3 and the expectations of pupils at the end of each Key Stage
- You and your cross-phase colleagues will collaborate on issues of curriculum and pedagogy as a normal part of your schools' transition practice

The **Work Groups** are fully funded by the Maths Hubs Programme, so are **free** to participating schools.



Fully funded

Secondary Teaching for Mastery

Development Work Groups

Professional development to enable you to introduce teaching for mastery across your maths department

What is involved?

Secondary maths teachers whose schools want to introduce teaching for mastery can nominate two teachers ('Mastery Advocates') to join a Work Group. Mastery Advocates then form part of a locally-based group of teachers who meet regularly to develop professional knowledge and expertise, and receive bespoke support.

Teachers will collaborate with colleagues from local schools, and get support and guidance from a Secondary Mastery Specialist, to introduce and embed teaching for mastery in their department.

Who can take part?

This programme is for state-funded secondary schools in England. Mastery Advocates should be teachers with the commitment, experience and authority to lead developmental work across a maths department. The support of the Head of Maths, and the headteacher or a member of SLT, is also essential.

In 2023/24, those teaching in special schools will have an enhanced offer that will enable them to network with other schools in a similar context.



Find out more

Search **secondary teaching for mastery** online or contact your local Maths Hub:

<https://www.sussexmathshub.co.uk/teaching-for-mastery-sec>

Benefits

- Your students will develop a deep, secure and connected understanding of the maths they are learning
- You will begin to develop teaching for mastery approaches within your own classroom
- You and your head of department will begin to develop an understanding of the practices and principles aligned to teaching for mastery
- You will begin to support the teachers in your department to develop teaching for mastery approaches in their practice

The **Work Groups** are fully funded by the Maths Hubs Programme, so are **free** to participating schools.



Fully funded

Secondary Maths Subject Leaders Community

A CPD community designed specifically for secondary heads of maths

What is involved?

This project provides an opportunity for participants to deepen their understanding of teaching approaches, of their wider roles, and of their capacity with their colleagues to transform secondary maths learning.

They will work collaboratively with other subject leaders, discuss developments and engage with research, and use this experience to inform their work in leading and developing maths education in school.

Who can take part?

The project is for secondary heads of department/subject leaders, and is open to heads of department in schools already involved with Maths Hubs and to those who are not yet involved. In their first year of engagement with this project, participants will be part of a Work Group. In subsequent years they will be part of a Maths Hub-led subject leadership community.



Find out more

Search **secondary maths subject leaders community** online or contact your local Maths Hub:

<https://www.sussexmathshub.co.uk/secondary-subject-leadership/>

Benefits

- You will promote and develop a shared vision, culture and set of principles for teaching and learning in maths
- You will ensure coherence in the curriculum and provide support for teaching for mastery across the department
- You and your department will establish collaborative ways of working to support ongoing developments
- You will develop in your ability to lead change

The **community** is fully funded by the Maths Hubs Programme, so is **free** to participating schools.



Fully funded

Secondary MAT Maths Leaders Community

A CPD community designed to support those leading maths across multiple schools

What is involved?

Now in its third year, this project supports those who lead maths across multiple schools within a MAT. Participants will deepen their understanding of effective pedagogical approaches, of their wider leadership roles, and of their capacity with their colleagues to transform secondary maths teaching and learning.

New participants will complete a bespoke programme, and those continuing the project will develop their work together as a community. There will be opportunities for new and continuing participants to work together, so all can benefit from central provision and the opportunity for practice exchange with peers.

Who can take part?

The project is for those who lead maths across multiple schools within a MAT, including at least one secondary school. This includes MAT maths leads who are continuing from previous years, and new participants. To better engage in the programme, participants are encouraged to have at least one school in a Secondary Teaching for Mastery Work Group in 2023/24, but this is not essential.



Find out more

Search **secondary MAT maths leaders community** online or contact your local Maths Hub:

<https://www.sussexmathshub.co.uk/maths-mat-leads/>

Benefits

- You will promote and develop a shared vision for effective teaching and learning in maths
- You will work with subject leaders across your MAT to lead and manage maths teaching effectively, and to develop teaching for mastery approaches within your own department
- You will understand the benefits of collaborative professional development for sustained development of professional knowledge and practice
- You will understand effective models of maths teacher professional development, the rationale for using them, and the evidence that supports them

The **community** is fully funded by the Maths Hubs Programme, so is **free** to participating schools.



Fully funded

Developing Core Maths Pedagogy

Work Groups

Develop improved teaching approaches for Core Maths

What is involved?

These Work Groups give teachers opportunities, through collaboration and experimentation, to develop improved teaching approaches that support the open-ended problem-solving skills Core Maths students need to develop, and to share these with departmental colleagues. Participants will design and trial classroom activities, sharing and reflecting on their experiences with others in the Work Group.

The project involves a direct working partnership between the Maths Hubs Network and the Advanced Mathematics Support Programme (AMSP).

Who can take part?

Participants should be experienced teachers of Core Maths from schools and colleges in at least their second year of teaching Core Maths. Where appropriate, participants will be expected to work with colleagues in their own department.



Find out more

Search **developing core maths pedagogy** online or contact your local Maths Hub:

<https://www.sussexmathshub.co.uk/developing-core-maths/>

Benefits

- Your students will gain raised awareness of the use of maths and statistics in everyday life
- You will teach mathematical concepts and processes effectively through contextualised problem-solving
- You will understand the philosophy of Core Maths
- You will support your school/college in developing clear ways of communicating and promoting its Core Maths offer

The **Work Groups** are fully funded by the Maths Hubs Programme, so are **free** to participating schools.



Fully funded

Developing A Level Pedagogy

Work Groups

Develop improved teaching approaches for A level Mathematics

What is involved?

This project explores and deepens participants' pedagogic content knowledge, empowering teachers to enhance their classroom practice and to influence department-wide A level teaching. It is an engine for improving student understanding of A level Maths, and driving their subsequent success. Participants will design and trial classroom activities, sharing and reflecting on their experiences with others in the Work Group.

The project involves a direct working partnership between the Maths Hubs Network and the Advanced Mathematics Support Programme (AMSP).

Who can take part?

Participants will be established teachers of A level Maths who are looking to deepen their pedagogical understanding. They must be teaching a current A level Maths group.

This Work Group would be particularly useful for those who may have already completed other A level subject knowledge and pedagogy CPD.

Benefits

- Your students will have a deeper conceptual understanding of the A level Maths content
- You will understand the purpose of the Overarching Themes, including use of technology, and their impact on teaching and learning in A level Maths
- You and your department will have a better understanding of how ideas behind teaching for mastery can be used in the classroom
- You and your department will have a deeper understanding of content pedagogic knowledge for A level Maths

The **Work Groups** are fully funded by the Maths Hubs Programme and the AMSP, so are **free** to participating schools/colleges.



Find out more

Search **developing A level pedagogy** online or contact your local Maths Hub:

<https://www.sussexmathshub.co.uk/a-level-pedagogy/>

Fully funded

Cross Phase – Supporting Low Attainers to Achieve a L2 Qualification in Mathematics

Work Groups

What is involved?

This is for teachers whose students will study up to Level 2 maths across secondary and post-16. Teachers of Years 10 and 11, and of GCSE Maths resit and/or Functional Skills Maths, will develop ways to support students who need to study maths beyond age 16 to achieve a L2 qualification.

Work Groups will focus on developing transferable teaching techniques aligned to teaching for mastery. Participants will attend three full-day workshops and complete practice-based tasks between sessions.

Who can take part?

This is for teachers of GCSE Maths, and for those teaching GCSE Maths resit and/or Functional Skills Maths. Participants may be based in secondary schools, UTCs, FE colleges, Sixth Form colleges, schools with post-16 provision, or other post-16 settings.



Find out more

Search **ncetm cross phase supporting low attainers** online or contact your local Maths Hub:

<https://www.sussexmathshub.co.uk/supporting-at-gcse>

Benefits

- Your students will demonstrate a positive attitude to maths
- You will ensure that lesson design and pedagogy demonstrate a secure knowledge of curriculum continuity and sequencing
- You will understand the importance of consistency of language and representations relating to specific curriculum areas
- You and your colleagues will make collaboration a normal part of transition, supporting students continuing to work towards a L2 maths qualification

The **Work Groups** are fully funded by the Maths Hubs Programme, so are **free** to participating schools/ institutions.



Fully funded

Specialist Knowledge for Teaching Mathematics (SKTM)

Early Years Teachers

Develop mathematical subject knowledge and pedagogy

What is involved?

This programme is designed to improve the subject knowledge and pedagogical knowledge for all practitioners teaching and supporting the learning of early maths.

There are two types of SKTM Early Years pathways: Pathway One: Number Patterns and Structures, and Pathway Two: Pattern, Shape, Space and Measures. Each pathway consists of the equivalent of four days, spread out over a minimum of two terms. Professional learning and practice development continue throughout, with participants introducing new ideas into their daily practice.

Who can take part?

This project is for Early Years teachers who would like to develop their specialist knowledge for teaching maths to Reception pupils. It may be particularly relevant for teachers that have moved phases or have not received maths-specific training.



Find out more

Search **early years SKTM** online or contact your local Maths Hub:

<https://www.sussexmathshub.co.uk/sktm-early-years/>

Benefits

- Your pupils will demonstrate a positive attitude towards maths, being willing to have a go, persevere, and share their mathematical ideas
- You will explore and increase your use of a range of pedagogic approaches that will support pupils in engaging with and developing their maths
- You will understand how maths opportunities can be developed across all areas and in everyday routines

The **programme** is fully funded by the Maths Hubs Programme, so is **free** to participating schools.



Fully funded

Specialist Knowledge for Teaching Mathematics (SKTM)

Primary Teachers

Develop mathematical subject knowledge and pedagogy

What is involved?

This project is designed to improve the subject knowledge and pedagogical knowledge for all practitioners teaching and supporting the learning of primary maths.

There are two pathways: Number, and Spatial Reasoning. Each pathway consists of the equivalent of four days, spread out over a minimum of two terms. Professional learning and practice development continue throughout, with participants introducing new ideas into their daily practice.

Who can take part?

This programme is designed for primary teachers who would like to develop their specialist knowledge for teaching maths. This may be particularly relevant for teachers who have moved phases or have not received maths-specific training.



Find out more

Search **SKTM primary teachers** online or contact your local Maths Hub:

<https://www.sussexmathshub.co.uk/sktm-primary-teachers/>

Benefits

- Your pupils will positively engage with maths that challenges them
- Your pupils will be able to explain their maths and their mathematical thinking using appropriate language
- You will identify pedagogical approaches that will enhance teaching and learning, and know how to plan for these
- You will enhance your maths subject knowledge with an emphasis on the key concepts in each mathematical area covered

The **programme** is fully funded by the Maths Hubs Programme, so is **free** to participating schools.



Fully funded

Specialist Knowledge for Teaching Mathematics (SKTM)

Primary Teaching Assistants

Develop mathematical subject knowledge and pedagogy

What is involved?

This project is designed to improve the subject knowledge and pedagogical knowledge for all practitioners supporting the learning of primary maths.

It supports primary teaching assistants who are supporting maths to develop specialist knowledge for teaching maths, to build on the primary maths national curriculum, and to develop distinct pedagogical decision-making which will impact on their practice when supporting maths. It takes place over the equivalent of four days.

Who can take part?

This programme is designed for primary teaching assistants who are supporting maths, and who would like to develop their specialist knowledge for teaching maths. This may be particularly relevant for new TAs or TAs who have not received maths-specific training.



Find out more

Search **SKTM primary teaching assistants** online or contact your local Maths Hub:

<https://www.sussexmathshub.co.uk/subject-knowledge-primary-ta>

Benefits

- Your pupils will positively engage with maths that challenges them
- You will identify common misconceptions and ways of addressing these to help pupils master important concepts
- You will develop an understanding of key principles and approaches associated with teaching for mastery

The **programme** is fully funded by the Maths Hubs Programme, so is **free** to participating schools.



Fully funded

Specialist Knowledge for Teaching Mathematics (SKTM)

Primary Early Career Teachers

Develop mathematical subject knowledge and pedagogy

What is involved?

Two maths-specific subject knowledge projects are available to support primary Early Career Teachers (ECTs) – one is for ECTs who have not yet participated in this project, and one is for those who participated in 2022/23. Both projects offer high-quality subject knowledge and pedagogy maths support for ECTs, recognising the requirements of the ECF.

This programme strikes a balance between developing teachers' maths subject knowledge and pedagogical content knowledge, alongside classroom practice to support the learning of maths. Participants will attend the equivalent of up to four days of sessions, focusing between sessions on the use of tasks in the classroom.

Who can take part?

Phase 1 is for those identified as Early Career Teachers – teachers in their first or second year of teaching. Phase 2 is for those in the early part of their careers. They will have engaged with Phase 1 before engaging with this phase.



Find out more

Search **SKTM primary early career teachers** online or contact your local Maths Hub:

<https://www.sussexmathshub.co.uk/subject-knowledge-early-career>

Benefits

- Your pupils will be seen to elaborate when responding to questions, showing that their answer stems from secure understanding
- You will evaluate and adapt existing resources to enable them to be used to meet the needs of pupils
- You will develop an understanding of approaches to assess pupils' prior learning, so that learning sequences are planned to take this into account

The **programme** is fully funded by the Maths Hubs Programme, so is **free** to participating schools.



Fully funded

Specialist Knowledge for Teaching Mathematics (SKTM)

Secondary Early Career Teachers

Develop mathematical subject knowledge and pedagogy

What is involved?

Two maths-specific subject knowledge projects are available to support secondary Early Career Teachers (ECTs) – one is for ECTs who have not yet participated in this project, and one is for those who participated in 2022/23. Both projects offer high-quality subject knowledge and pedagogy maths support for ECTs, recognising the requirements of the ECF.

The programme will build on the knowledge gained during initial teacher training. This will be achieved by focusing on one area of maths in detail: multiplicative reasoning for participants in Phase 1, and sequences and graphical representations for participants in Phase 2.

Who can take part?

Phase 1 is for those identified as Early Career Teachers – teachers in their first or second year of teaching. Phase 2 is for those in the early part of their careers. They will have engaged with Phase 1 before engaging with this phase.



Find out more

Search **SKTM secondary early career teachers** online or contact your local Maths Hub:

<https://www.sussexmathshub.co.uk/sktm-secondary-early-career/>

Benefits

- Your students will reason with increasing confidence in response to effective questioning within the classroom
- You will consider task and lesson design, with your students' needs in mind
- You will notice aspects of teaching for mastery within a given task or lesson, and be able to articulate their purpose

The **programme** is fully funded by the Maths Hubs Programme, so is **free** to participating schools.



Fully funded

Specialist Knowledge for Teaching Mathematics (SKTM)

Secondary Non-specialist Teachers

Highly-regarded professional development offering secondary non-specialist maths teachers valuable CPD focusing on subject knowledge and pedagogy

There are significant numbers of people teaching maths in secondary schools without specialist initial teacher training. This programme supports non-specialist teachers in developing the specialist knowledge (the blend of subject knowledge and pedagogical knowledge) for teaching maths.

It is designed to take place over the equivalent of six days.

Who can take part?

This programme is provided for non-specialist teachers of maths in state-funded schools who fit the following definition: A non-specialist teacher of mathematics is 'a teacher that is currently teaching some mathematics or has commitment from a headteacher/executive head to teach some mathematics within the next year, who has not undertaken initial teacher training (ITT) in mathematics'



Find out more

Search **SKTM secondary non-specialist maths teachers** online or contact your local Maths Hub:

<https://www.sussexmathshub.co.uk/sktm-secondary-non-specialist/>

Benefits

The SKTM Programme offers participants:

- Your students will develop a deep, secure and connected understanding of the maths they are learning
- You will increase your confidence in planning for progression in maths
- You will improve your subject and curriculum knowledge of secondary maths

The **programme** is fully funded by the Maths Hubs Programme, so is **free** to participating schools.



Fully funded

Specialist Knowledge for Teaching Mathematics (SKTM)

Secondary Teaching Assistants

Develop mathematical subject knowledge and pedagogy

What is involved?

This programme is designed to improve the subject knowledge and pedagogical knowledge of all TAs supporting the learning of secondary maths.

Participants will focus on using precise mathematical language, representations, and reasoning within the topics: addition and subtraction; multiplication and division; ratio; and fractions. They will also carry out follow-up tasks in school to enable practice transfer to the classroom. The programme will take place over the equivalent of four days; participants must attend all sessions.

Who can take part?

This is for teaching assistants who work predominantly with students in the KS3 maths classroom or who lead intervention sessions with groups of students. Participants' schools should already be engaged with a Teaching for Mastery Work Group, and this programme will complement this provision.



Find out more

Search **SKTM secondary teaching assistants** online or contact your local Maths Hub:

<https://www.sussexmathshub.co.uk/sktm-secondary-ta/>

Benefits

- Your students will demonstrate a positive attitude towards the learning of maths
- You will use appropriate mathematical language and representations with confidence
- You will develop your understanding of how to adapt resources to meet students' needs
- You will develop an understanding of how algebra relates to the generalisation of number

The **programme** is fully funded by the Maths Hubs Programme, so is **free** to participating schools.



Fully funded

Specialist Knowledge for Teaching Mathematics (SKTM)

Core Maths Teachers

Support for teachers new to teaching this qualification

What is involved?

This programme supports teachers in developing specialist knowledge for teaching Core Maths and increases their confidence in teaching the course. The programme forms part of the overall Advanced Mathematics Support Programme (AMSP) and Maths Hubs Core Maths professional development offer.

The principal focus is on Core Maths subject knowledge and pedagogy, and the programme will be based on six key themes: using contextualised problem-solving; applying Fermi estimation and modelling; developing critical analysis; making sense of finance; using the pre-release materials; exploring statistics.

Who can take part?

This programme is for teachers who are in their first two years of teaching Core Maths and are teaching a Core Maths class during the academic year 2023/24.



Find out more

Search **SKTM core maths** online or contact your local Maths Hub:

<https://www.sussexmathshub.co.uk/core-maths>

Benefits

- Your students will gain raised awareness of the use of maths and statistics in everyday life
- You will plan lessons/sequences of lessons to promote student understanding, confidence, and progress
- You will understand the philosophy of Core Maths, with its approach to maths through contextualised problem-solving
- You will understand how online learning and technology can be used to support Core Maths teaching

The **programme** is fully funded by the Maths Hubs Programme and the AMSP, so is **free** to participating schools.

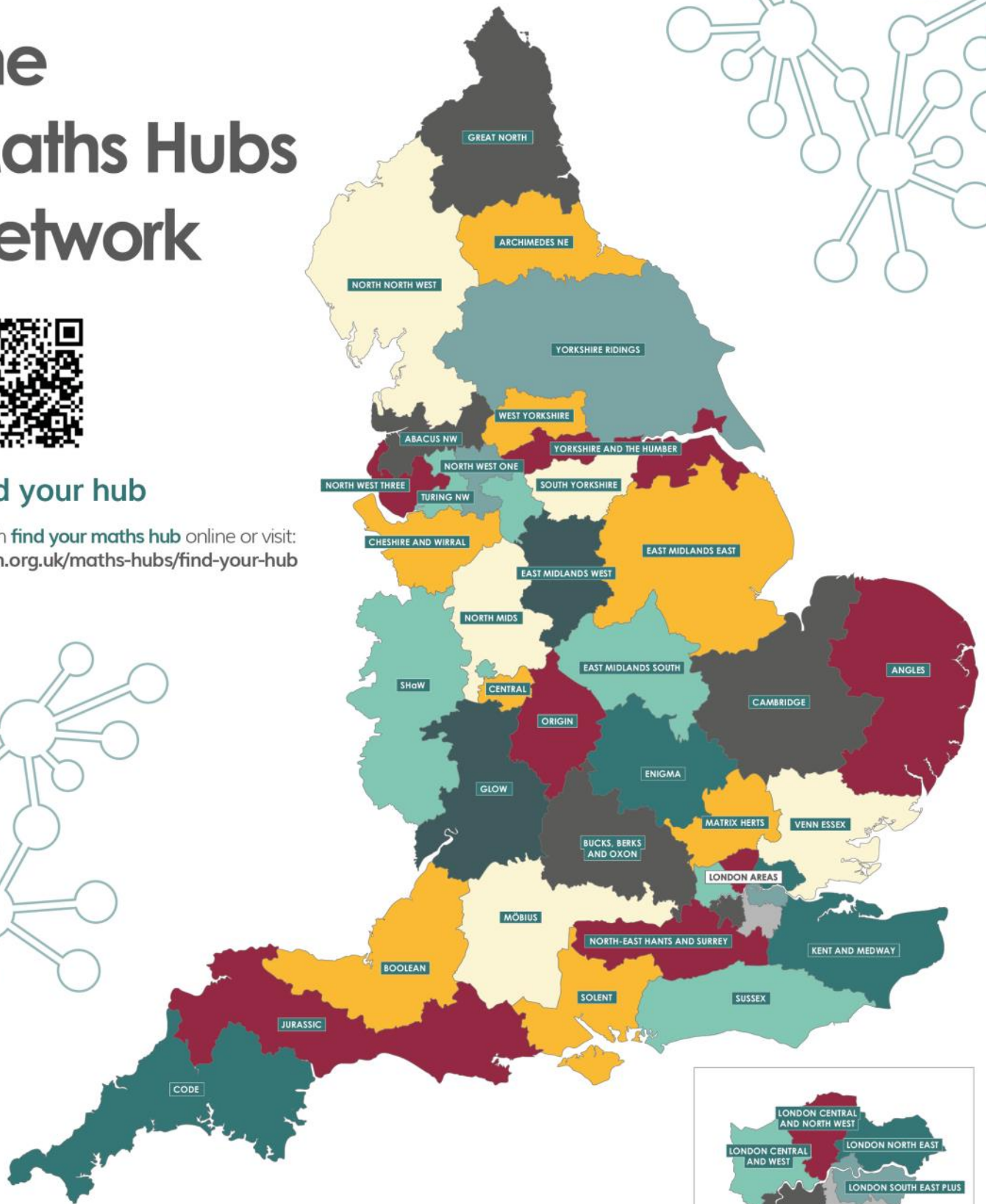


The Maths Hubs Network



Find your hub

Search **find your maths hub** online or visit:
ncetm.org.uk/maths-hubs/find-your-hub



NCETM
NATIONAL CENTRE FOR EXCELLENCE
IN THE TEACHING OF MATHEMATICS